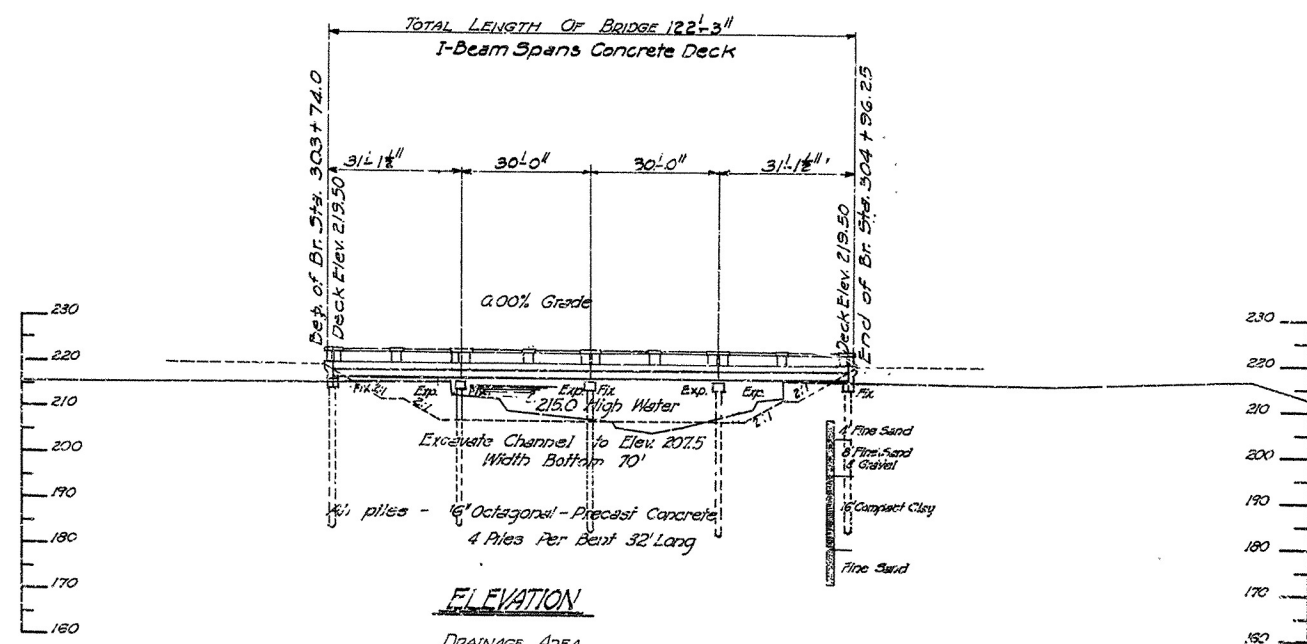
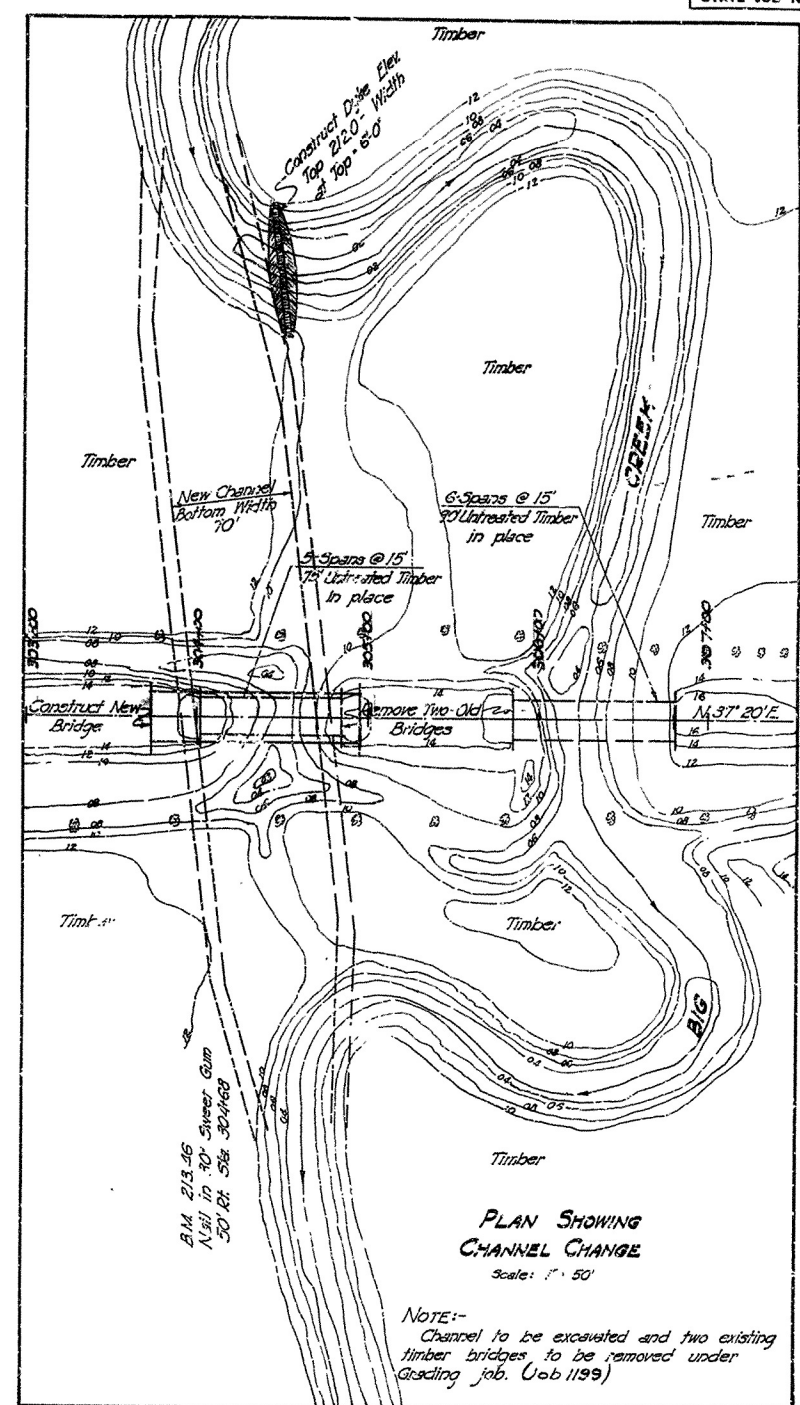
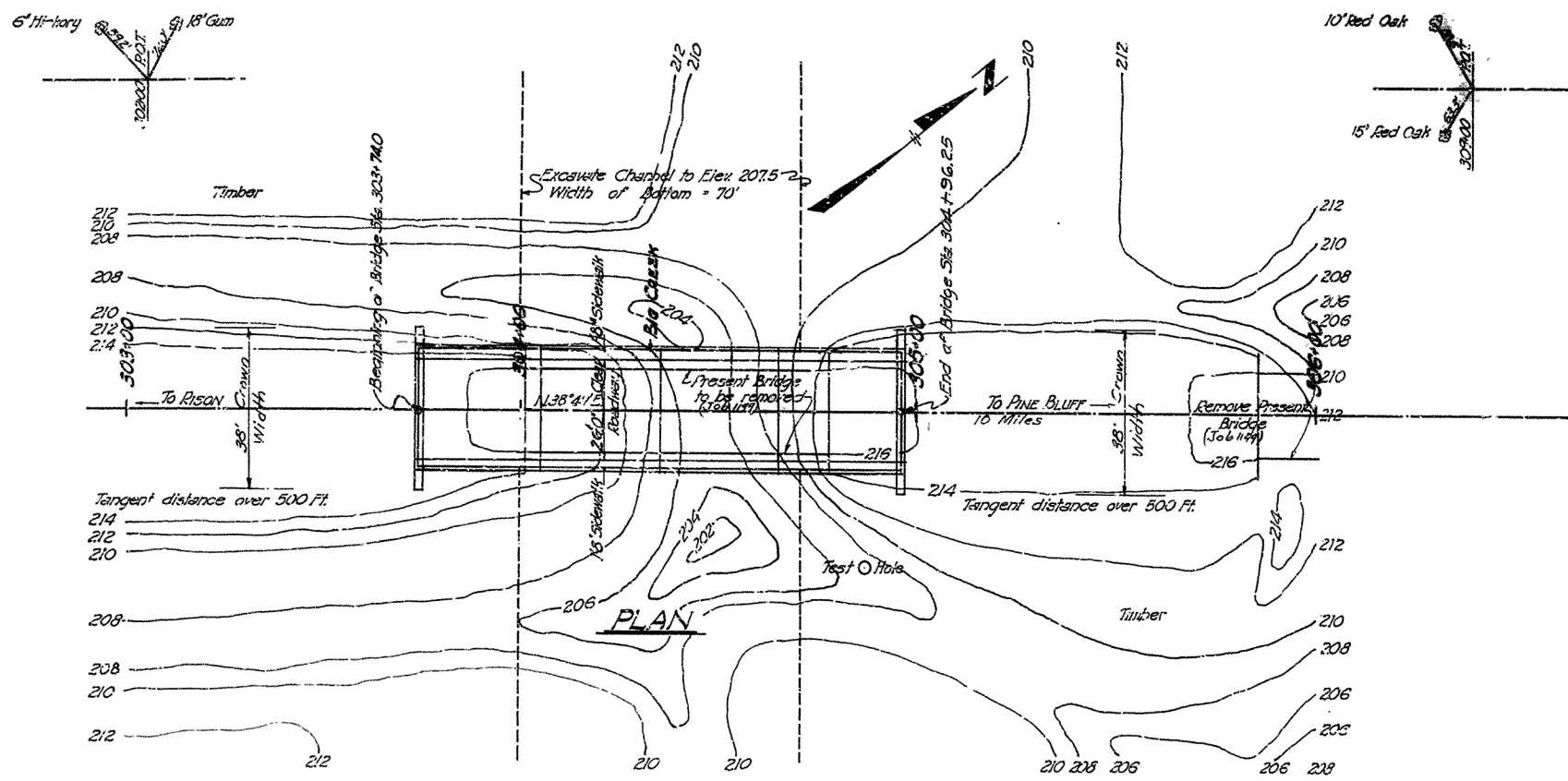


FD. ROAD DIST. NO.	STAT.	PROJ. O.	FECA. YEAR	SHEET NO.	TOTAL SHEETS
8	ARK.	393 (4)		4	12
STATE JOB NO. 1201					



LIST OF QUANTITIES BRIDGE No. 2149

ITEM No.	ITEM	QUANTITY	UNIT
103	Dry Excavation for Structures	40	Cu. Yds.
SP&B02	Class 'B' Concrete for Bridges	139.80	Cu. Yds.
SP&B03	Reinforcing Steel	26128	Lbs.
804	Concrete Piling	640	Lbs. Ft.
R25	Concrete Piling	252	Lbs. Ft.
SP&R07	Structural Steel in Beam Spans	63194	Lbs.
929	Bridge Name Plates (Type 'B')	1	Each

NOTE:- Drive one pile in Bent No. 2 as Test Pile. Cast 35' long. Lengths of Piling shown are assumed for estimating purposes only. Actual lengths are to be determined in the field.

or details of Spans & Bents see Drawing No. 5252 & 5252A For Backfill for Structures see Drawing No. 1888. For Basis for Computing 'Excavation for Structures' see Drawing No. 1891.

LOADING - H-20
Stresses:- Struct. Steel = 18,000#/sq. in.
Reinf. " = 18,000#/sq. in.
Concrete = 1,000#/sq. in.
n = 10

LAYOUT
BRIDGE OVER BIG CREEK
PINE BLUFF TO RISON ROAD
JEFFERSON COUNTY
ROUTE 79 SEC. 9

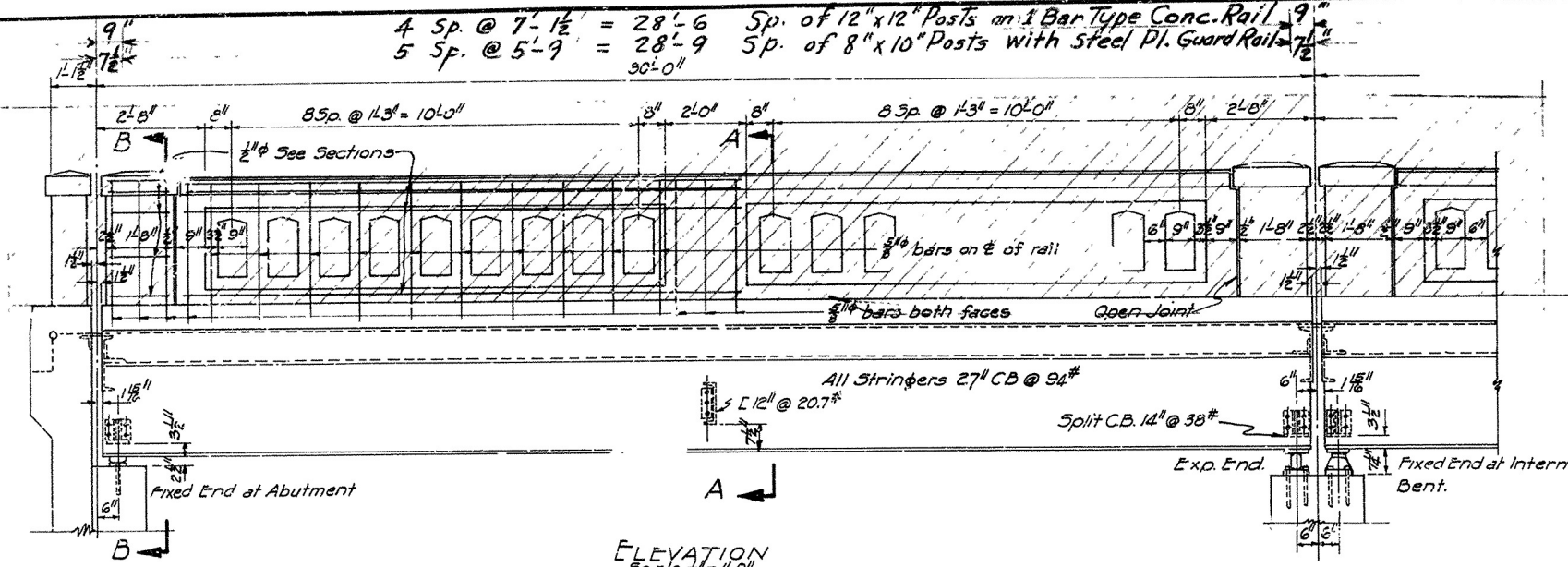
ARKANSAS STATE HIGHWAY COMMISSION
LITTLE ROCK, ARK.
Drawn By: *W. Q. D.* Date: 7/23/39
Traced By: *L. E. D.* Date: 5/18/39
Checked By: _____ Date: _____
BRIDGE NO. 2149 DRAWING NO. 6473
Scale: 1 in. = 20 ft. and as noted

REVISED - 10-27-43 L.P.C.
3-5-46 L.A.M.

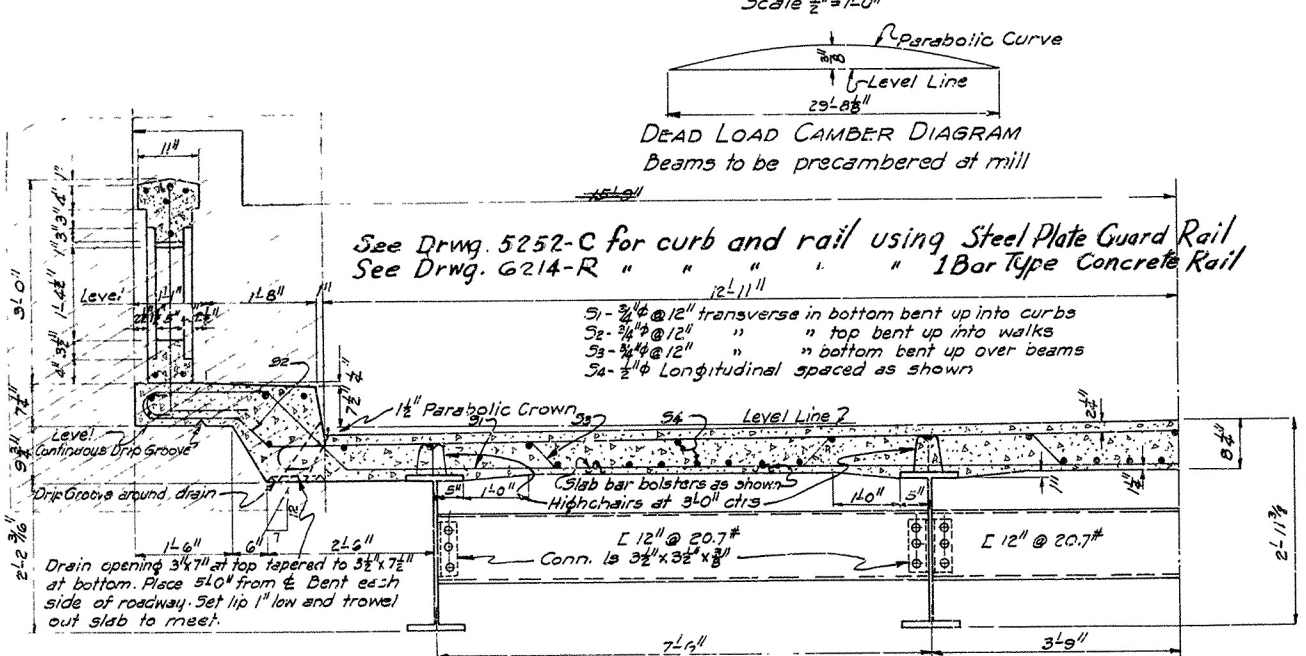
W. B. Lanner
PRINCIPAL HIGHWAY ENGINEER (EMERITUS)

FED. ROAD DIST. NO.	STATE	PROJECT NO.	FISCAL YEAR	SHEET NO.	TOTAL SHEETS
	ARK.				
STATE JOB NO.					

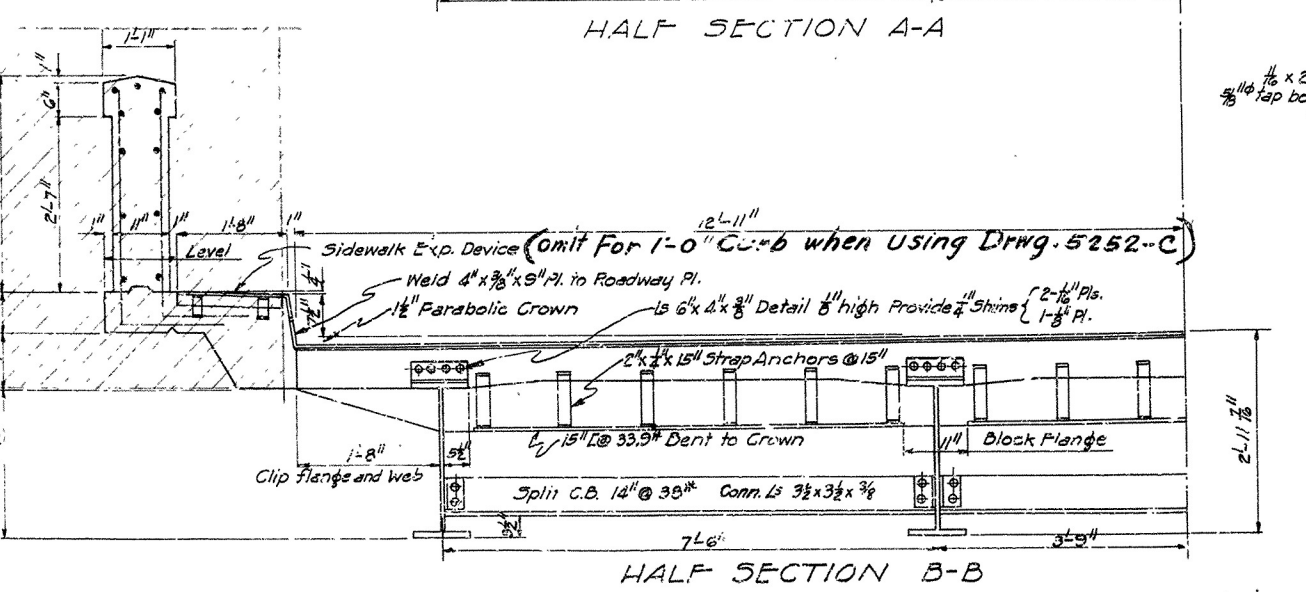
4 Sp. @ 7'-1 1/2" = 28'-6" Sp. of 12"x12" Posts on 1 Bar Type Conc. Rail 9"
5 Sp. @ 5'-9" = 28'-9" Sp. of 8"x10" Posts with Steel Pl. Guard Rail 1 1/2"



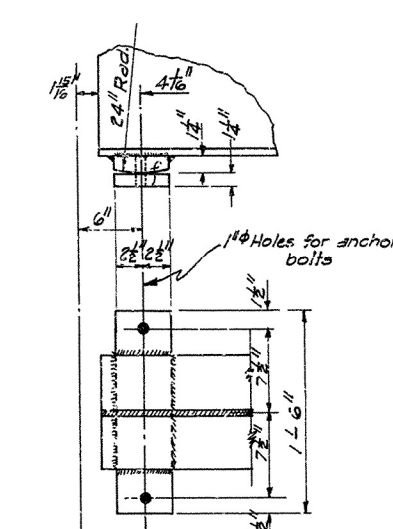
ELEVATION
Scale 1/2" = 1'-0"



DEAD LOAD CAMBER DIAGRAM
Beams to be pre-cambered at mill



HALF SECTION A-A
HALF SECTION B-B



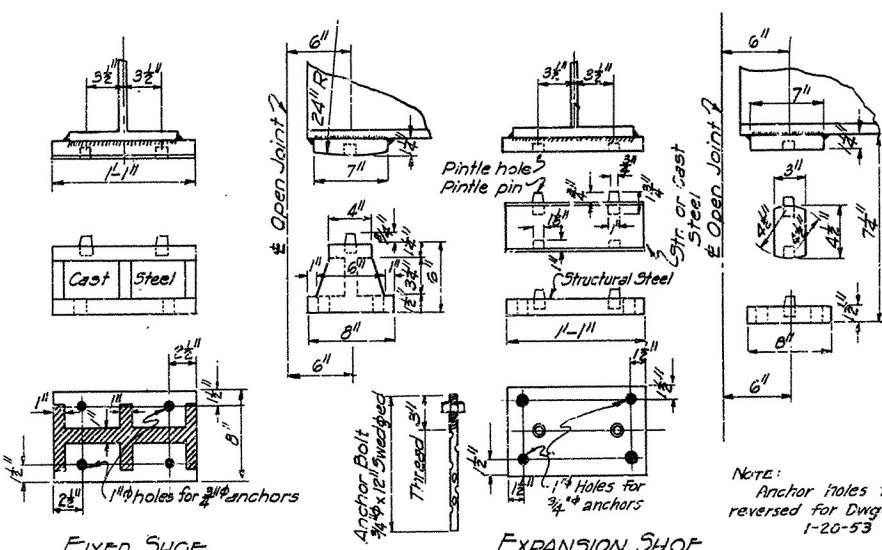
DETAIL OF PLATES AT END BENTS
Scale 1/2" = 1'-0"

LOADING H-20
Load Distribution Outside Girders -
Dead Load Per Ft. = 1450 #
Roadway Live Load Per Ft. = 366 #
Conc. Live Load = { 10800 # Mort.
14900 # Shear.
Truck Live Load = 113 Wheel
Load Distribution Inside Girders =
Dead Load Per Ft. = 1000 #
Roadway Live Load Per Ft. = 480 #
Conc. Live Load = { 13500 # Mort.
19500 # Shear.
Truck Live Load = 150 Wheel

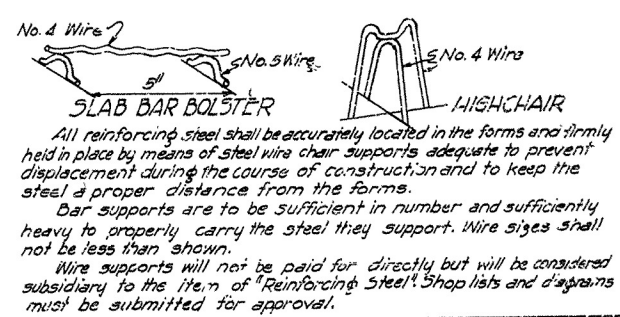
STRESSES
Structural Steel = 18000 #/sq in
Reinforcing Steel = 18000 #/sq in
Concrete = 1000 #/sq in
n = 10

GENERAL NOTES

All concrete to be Class "S" All exposed corners to have 3" chamfer unless otherwise noted.
Rivets 3/4" Open holes 1 1/4". Where bolts are indicated use machine bolts.
Structural shapes of equal or greater strength may be substituted for shapes shown but payment will be made on basis of shapes shown or those actually used whichever is the lesser.
All welded connections to be 3/8" fillet shop welds except as noted.
Shop Paint: All structural steel except surfaces in contact with concrete shall be given one coat of red lead and raw linseed oil before shipment.
Field Paint: First, White Lead tinted with Lampblack, Second coat Aluminum.
All bearing and roadway expansion devices to be paid for as Structural Steel in Beam Spans.
Care shall be exercised to obtain 90° in the angle between flange and web of beams at bearing points.
This drawing shows general features of design only. Shop drawings shall be made in accordance with the Specifications, submitted and approval secured before fabrication is begun.
In order to secure a good riding surface it will be required that the floor slab be struck off from curb to curb with a half span length longitudinal strike-off. The strike-off shall be sufficiently stiff so as to have no appreciable vertical deflection.
SPECIFICATIONS: Arkansas State Highway Commission Standard Specifications for Road and Bridge Construction, Adopted March 1st 1940



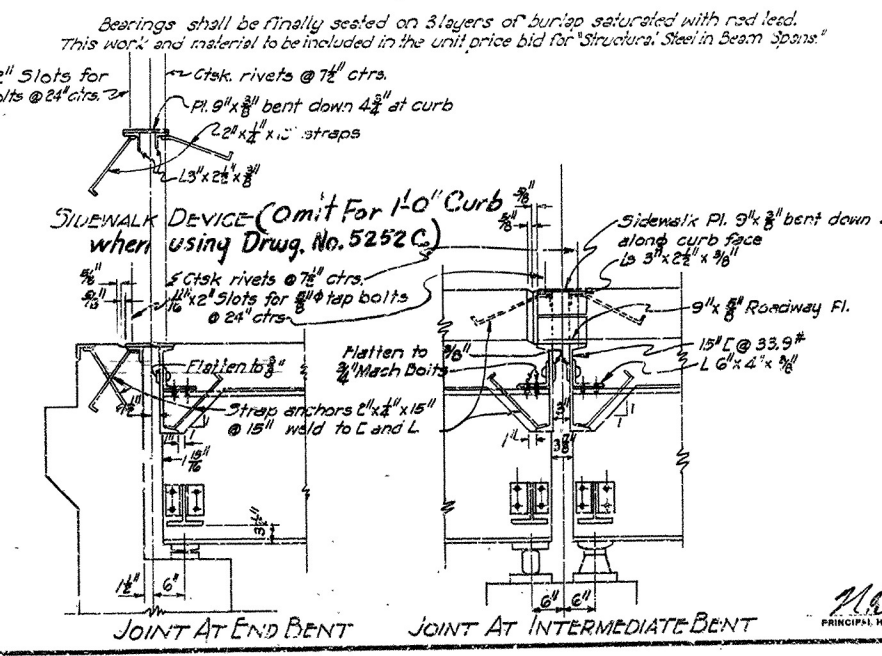
DETAILS OF BEARINGS
Scale 1/2" = 1'-0"



SLAB BAR BOLSTER
HIGH CHAIR

LIST OF BENT BARS

Mark	Size	Length	A	B	C
31	3/8"	30'-11"	25'-4"	1'-7"	1'-9"
32	3/8"	30'-11"	27'-6"	5'-8"	1'-3"
33	3/8"	28'-10"	3'-9"	3'-9"	3'-0"

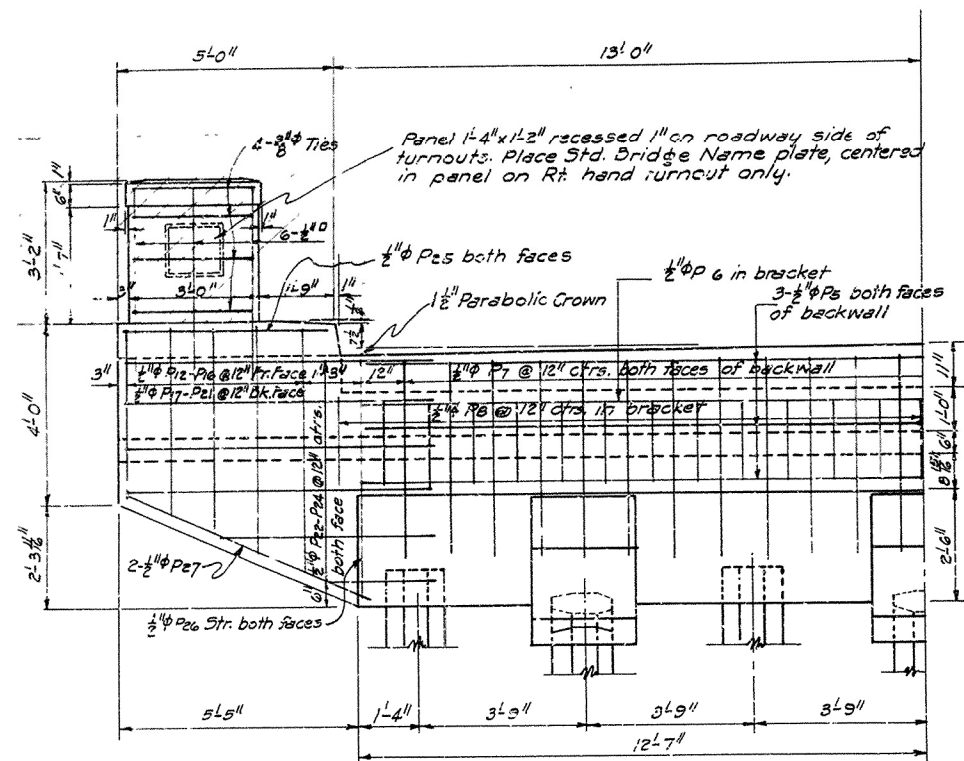


JOINT AT END BENT
JOINT AT INTERMEDIATE BENT

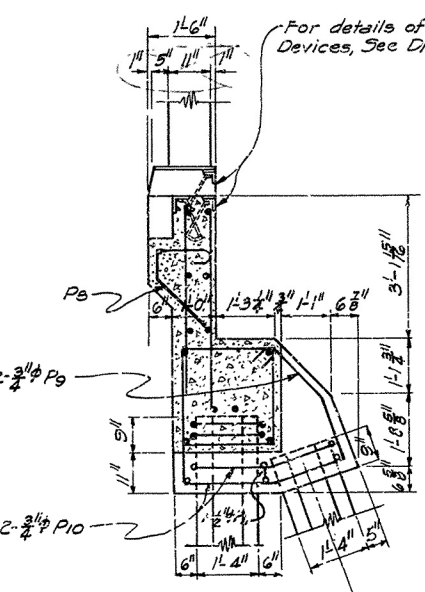
REVISED 6-6-46 Wt. of 27" C.B. Vert. Rail bars
REVISED 4-5-47 Ribbed Bolts
REVISED 11-20-47 Sealing Shoes
REVISED 8-25-48 Handrail & Curb Also 2-11-50
See also Drwg. No. 5252-C or 6214-R

DETAILS OF
STANDARD 30'-0" I-BEAM SPAN
26'-0" CLEAR ROADWAY 1'-8" WALKWAYS
ROUTE SEC.
ARKANSAS STATE HIGHWAY COMMISSION
LITTLE ROCK, ARK.
Drawn By: L.A.M. Date: 1-14-44
Traced By: L.A.M. Date: 1-15-44
Checked By: Date: _____
Scale: 3/8" = 1 ft. and as noted
BRIDGE NO. _____ DRAWING NO. 5252

FED. ROAD DIST. NO.	STATE	PROJECT NO.	FISCAL YEAR	SHEET NO.	TOTAL SHEETS
6	ARK.				
STATE JO. NO.					



HALF FRONT ELEVATION END BENT
Cap Reinforcing same as shown for intermediate bent



SECTION AT BATTER PILE

For details of Expansion Devices, See Drawing No. 5252

